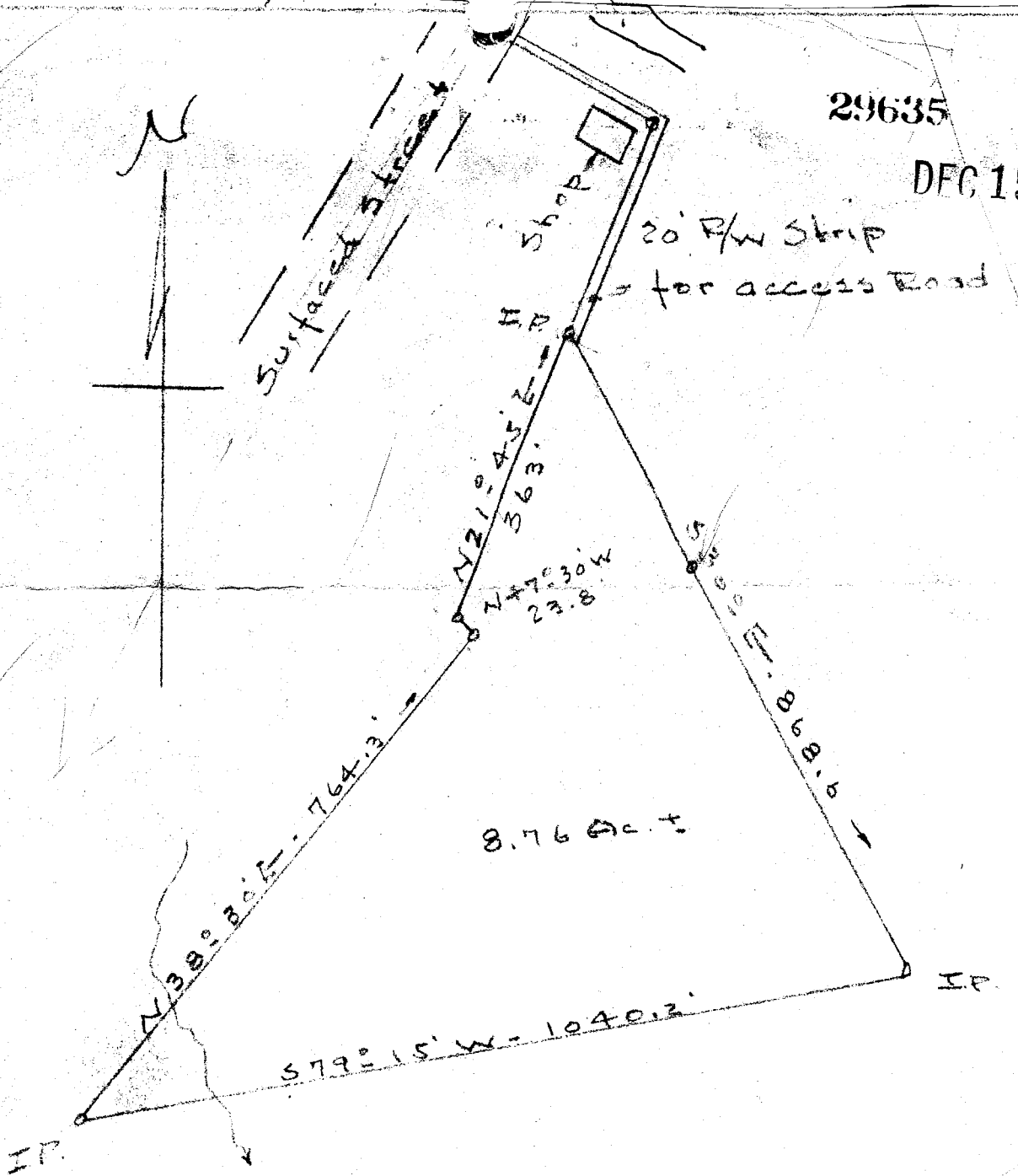


29635

DEC 15 1949



PROPERTY OF  
 G. YOUNG STYLE S  
 Travelers Rest - S.C.  
 Scale 1" = 200' - Dec. 12-49

FILED  
 18615  
 THE FARMER  
 R. M.

N-21 J.C. Hill - L.S. 805

*Direct G. Young style*  
 21

29635 Filed This 15 day of Dec-19 49  
 2nd Recorded to Vol. 12 Page 21 at 101 M.  
 Robin Gansworth  
 Register Means Conveyance Greenville County, S.C.